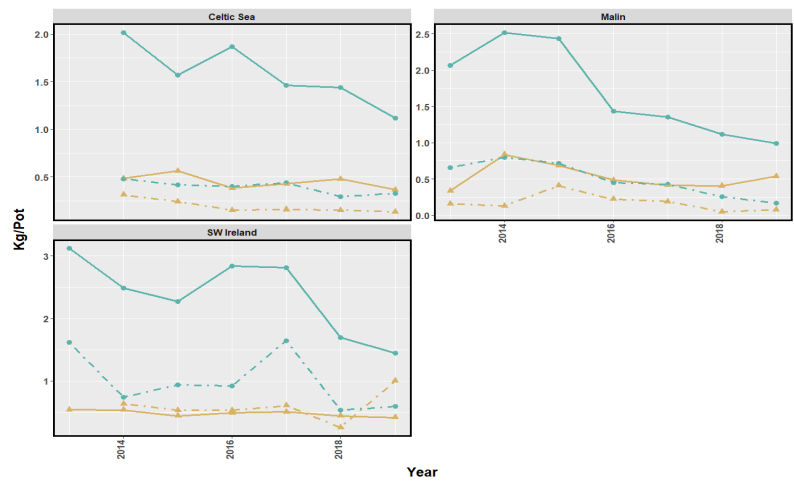
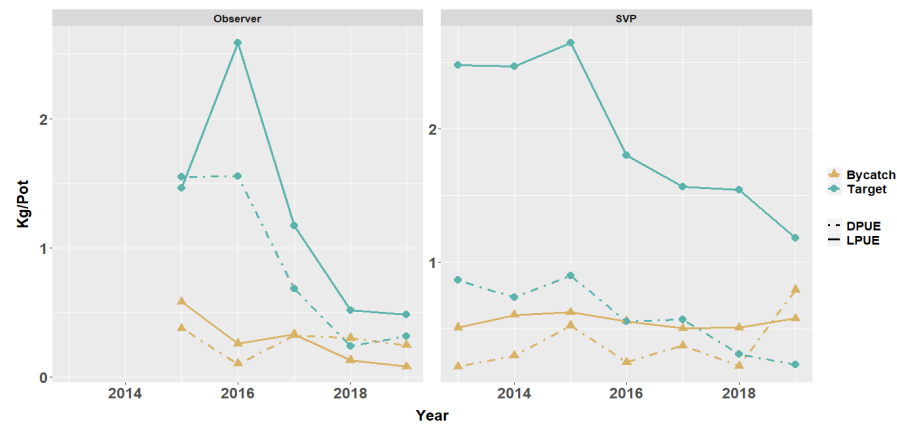
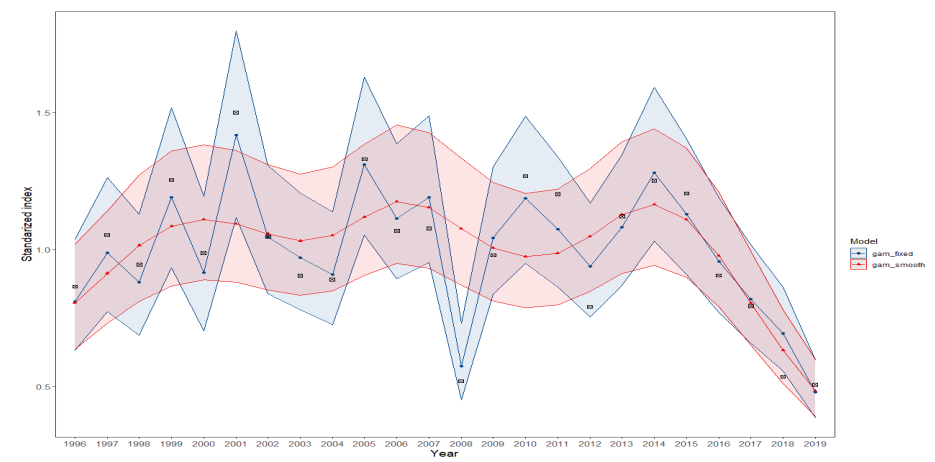
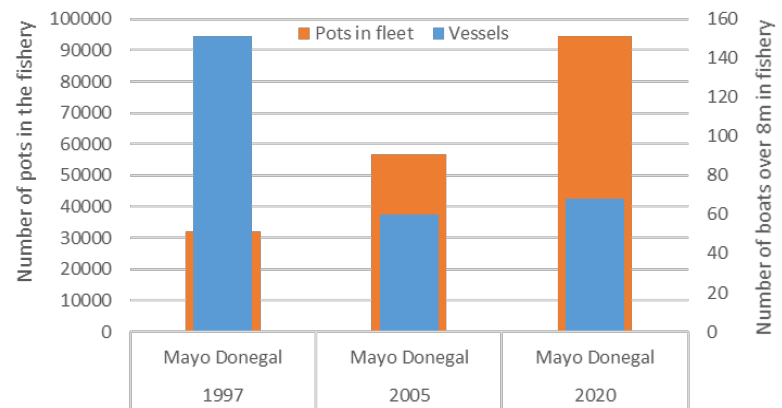


Questionnaire: asking industry their views on the crab fishery in 2020 and if it agreed or not with observed data

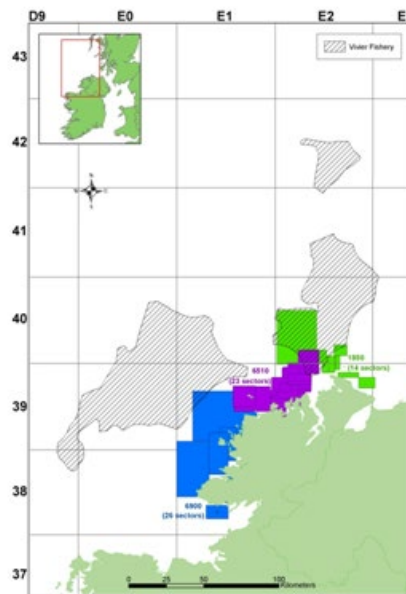


Declines observed in all areas and in all datasets from 2016-2017. Subsequent sPiCT assessment identified $F > F_{msy}$ and $B < B_{msy}$

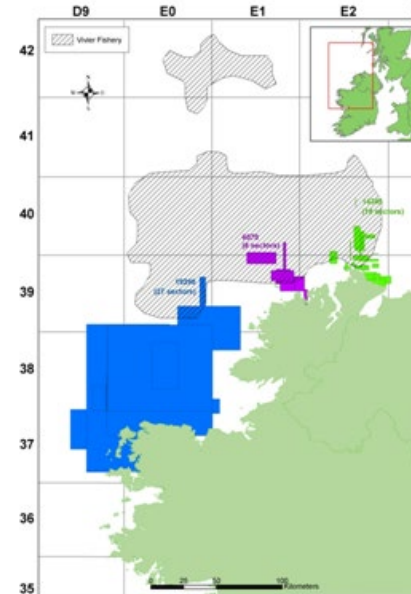




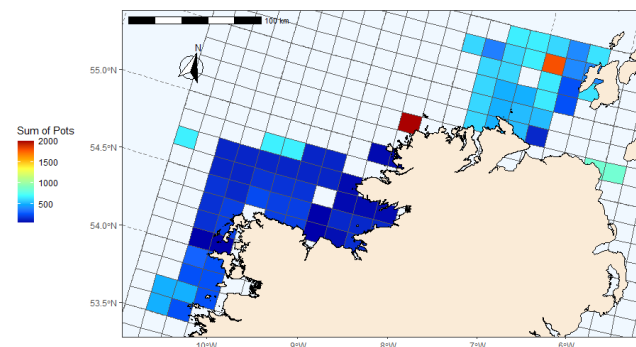
1997



2005



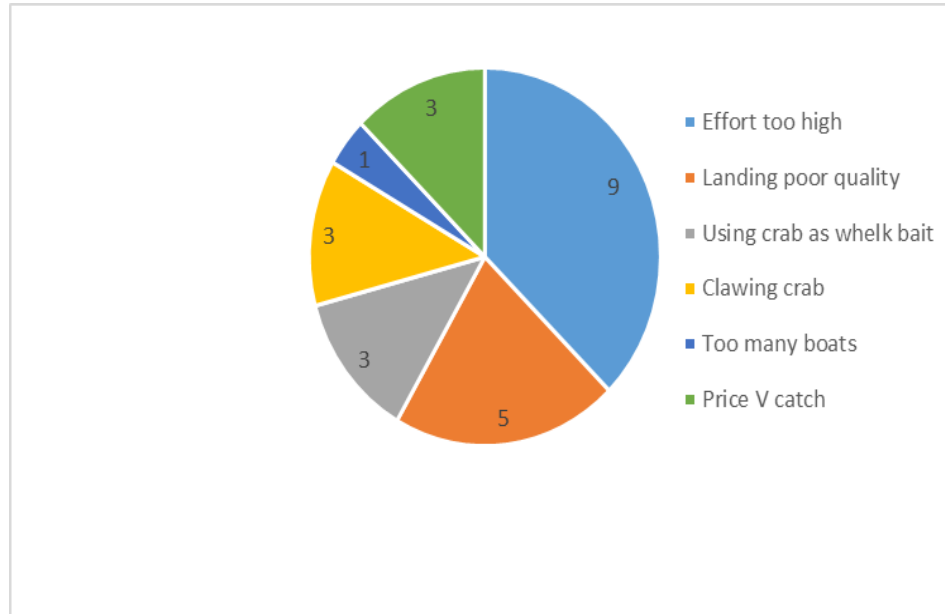
2017-2019



Trends in catch rates and total catches were almost unanimously reported to be negative during years 2017-2019 and correspond to the trends seen in the data presented above. The following are some of the responses:

- Very poor
- Down 60 % since 2015
- Halving every year
- 2011 7,000 boxes landed using 800 pots, 2019 3,483 boxes using 2,000 pots
- Down; in trouble, gone, decline, down hard, future poor
- Description of fishery in recent successive years; great, good, slow, disaster
- If prices return to pre Chinese market what will that mean? Out of business
 - Net profit = (LPUE*unit price*effort) - costs

Issues identified



Solutions proposed

